



* Be sure to read the accompanying Instructions for Use before using the Tri Auto ZX2+.
* Always wear appropriate gloves when you perform reprocessing.

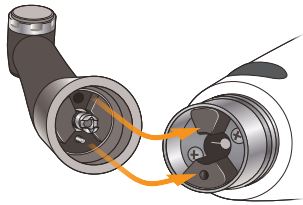
EO Endo. Optimized.

Before Use

Component Assembly

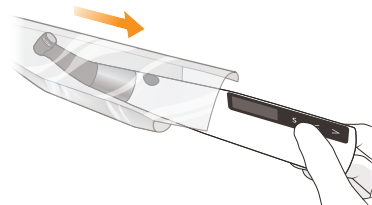
Step 1

Connect Contra Angle



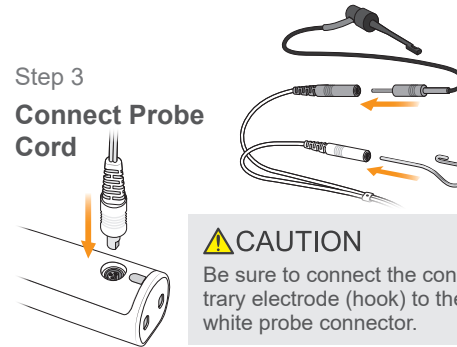
Step 2

Put on HP Protective Sleeve



Step 3

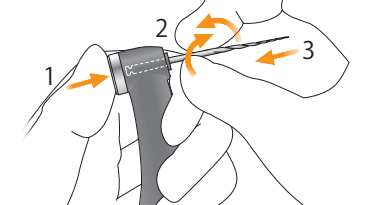
Connect Probe Cord



CAUTION
Be sure to connect the contrary electrode (hook) to the white probe connector.

Step 4

Install File



Function Check

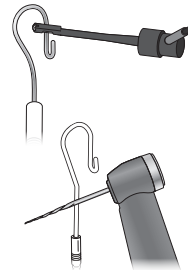
Step 1

Apex Location Function

Turn the power on. Touch the contrary electrode (hook) with the file and the clip on the end of the file holder; make sure that all the indicator bars on the meter in the LCD display light up.

WARNING

If all the indicator bars do not light up, stop using the instrument immediately and have it professionally repaired.

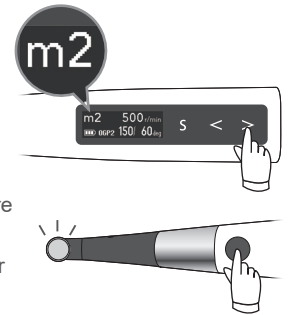


Step 2

Motor Rotation

Select "m2" (OGP2 mode). Press the Main switch and make sure the motor runs smoothly.

! If the motor does not rotate properly, or there are abnormal noises or vibrations, stop using the device immediately and contact your local dealer or J. MORITA OFFICE.

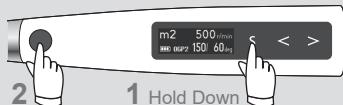


Turning the Power On/Off

On



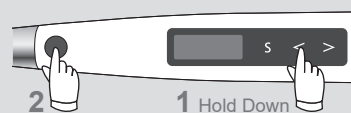
Off



Calibration

(Before first use after purchase, after replacing the contra angle, if OTR action is triggered erratically or at random, etc.)

Connect the contra angle. With the instrument turned off, hold down the Left-Set switch (<) and then press the Main switch.

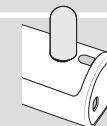


Press the Right-Set switch (>) to start calibration. After calibration, the instrument will automatically return to the Standby display.



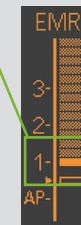
Checking with Tester (once a week)

Turn the power on. Connect the tester. Check the meter reading.



• If the meter lights up to within two bars of bar number 1: Normal

• If the meter lights up to two bars more or less than bar number 1: Stop using the instrument immediately and have it professionally repaired.



Display Settings

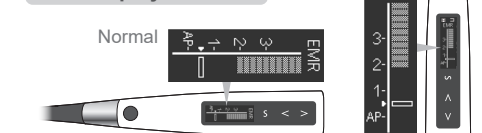
Following settings can be changed depending on the user's preference.

Refer to the accompanying Instructions for Use, "Other Handpiece Functions" section.

Dominant Hand



EMR Display Direction



Reprocessing – after each use

After Use

Step 1
Turn Power Off

Step 2
Take Out File

Step 3
Remove HP Protective Sleeve

WARNING
Never reuse the HP protective sleeve.

Step 4
Charge Battery

Sterilization

Parts to be Sterilized

- a. File Holder
- b. Contrary Electrode
- c. Long File Holder
- d. Contra Angle
- e. Handpiece Holder*
- f. External File Electrode (with cap)*

Step 1
Pre-treatment

Step 2
Cleaning & Disinfection

Operating Conditions for Washer Disinfectors

Unit Name	Miele G7881
Mode	Vario TD (cleaning time: 5 minutes)
Detergent (concentration)	neodisher MediClean (0.3% to 0.5%)
Rinse (concentration)	neodisher MediKlar (0.03% to 0.05%)

Step 3
Lubrication (only for the contra angle)

Lubricate the contra angle with the LS OIL. Wipe any excess oil off of the contra angle.

Step 4
Packing

Step 5
Sterilization

Recommendation:

Country: U.S.A.

Sterilizer type	Temperature	Time (minutes)	Drying time after sterilization (minutes)
Gravity	+132 °C (+269.6 °F)	15	15
	+121 °C (+249.8 °F)	30	

Country: Other than U.S.A.

Dynamic Air Removal	Temperature	3	10
		5	
Gravity	+134 °C (+273.2 °F)	min. 6	10
	+121 °C (+249.8 °F)	min. 60	

Disinfection

Parts to be Disinfected

- g. Motor Handpiece
- h. Probe Cord
- i. Battery Charger
- j. Guide Bar
- k. Tester

Step 1
Pre-treatment

Step 2
Cleaning & Disinfection

Disinfectants Approved by J. MORITA MFG. CORP.

Disinfectant	Country
Ethanol (70 vol% to 80 vol%)	U.S.A.
Opti-Cide3 (wipes)	
FD366 sensitive (wipes)	Other than U.S.A.

* Option (sold separately)

Trademarks and Registered Trademarks: Parts of the names of companies, products, services, etc. used in this manual may contain either trademarks or registered trademarks owned by each company.